

Maximizing Usability of the Pathlete Platform

Steven LeClerc, Benjamin Pinault, Francisco Santana

Advisor: Radim Bartos



Introduction

The platform needed a strategy to improve aspects of the usability.

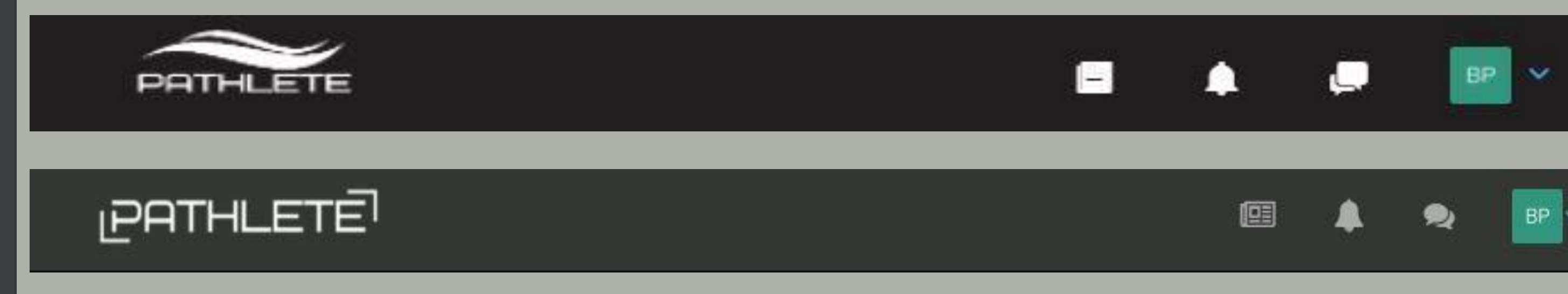
- **Content Strategy:** Users were unable to search content on the site, including others users' profile.
- **User Experience:** The platform didn't give users a way to contact the company to report bugs or other users. Users were unable to customize their profile pages with profile pictures and statistics.
- **Visual Design:** The site's navigation bar didn't match the overall site design and was in need of improvements for responsiveness.

Implementation

- Designed and prototyped the platform's search UI which will be further developed to allow users to find each other with ease.
- Developed contact forms to enable users to report platform bugs as well as inappropriate content and other users.
- Added UI components to enable users to customize their profile pages.
- A navigation bar redesigned to match the platform's visual design and optimized responsiveness.

Improving Site Navigation

- Improved the overall design of the navigation bar by updating the icons, Pathlete logo, and color scheme.
- Separated the navigation bar and search bar functionality so that they will work independently.
- Fixed resizing bug with navigation bar.



Building the Search Feature

This project focused on the design of the user search UI.

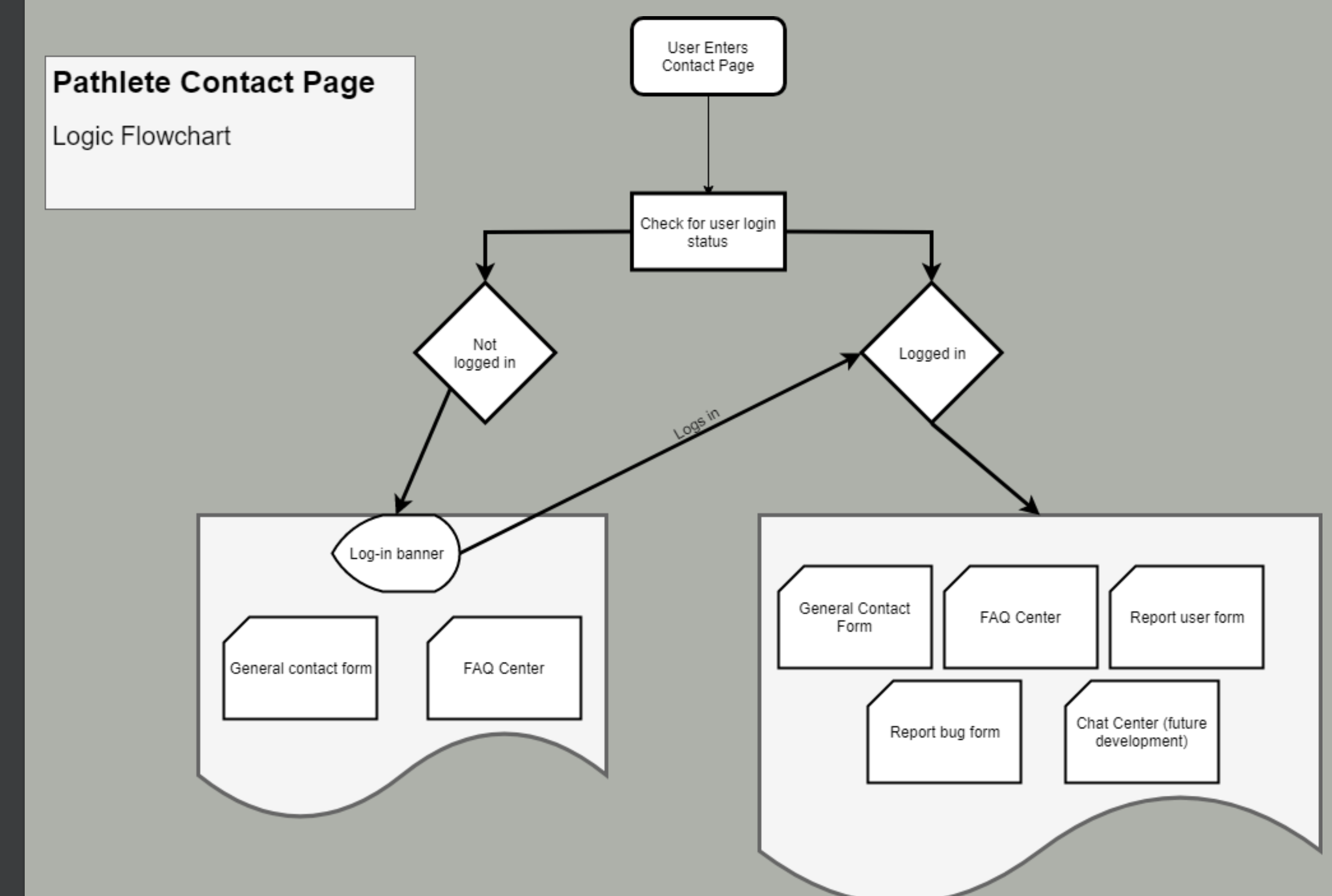
User story #1: As a coach, I want to perform a search by entering a sport and a set of desired statistics so that I can find the most relevant athlete to meet my university's academic and athletic requirements.

User story #2: As an athlete, I want to perform a school search based on their sports divisions and coaches so that I can find the most relevant schools with good athletic leadership.

Enhancing User Profiles

- Increase customization of user profiles by allowing users to upload their own profile images
- Focused on the front-end structure of this feature
- Can upload photos two ways, through clicking on their own profile picture on their profile, or by clicking a button on their edit-profile section

Designing Contact Pages



Future Work

- Add similar functionality of profile uploading methods to banner images
- Implement functionality to make the navigation bar mobile friendly.
- Continue development of the platform's search UI and add filter functionalities.
- Continued implementation of UI changes across the entire Pathlete platform
- Complete application of the contact page and the various components into fully working entity