



# A Syndemic Approach to Environmental Health in Manchester, New Hampshire

Sabrina Kadariya

Mentors: Dr. Semra Aytur, Dr. Robert McGrath

Department of Health Management and Policy, University of New Hampshire, Durham, NH



sabrina.kadariya@unh.edu

## Introduction

- Manchester, New Hampshire (NH): The Queen City, or the biggest city in northern New England. It has over 112,000 residents in this city and 400 miles of streets
- As you go down the “tree streets” of Beech, Maple, Pine, Spruce, and Chestnut, the amount of maintenance and attention these streets get, compared to the North End of Manchester, is disappointing.
- These once “well-kept” streets are now full of potholes, traffic of 6,000-7,000 cars a day, and alarming rates of crime.

## Research Questions

- What are the residents of Manchester, NH feeling about their surroundings?
- How do they use their surrounding environment?

## Positionality Statement

Being raised as a first-generation American in Manchester, New Hampshire, I have grown desensitized to the difference of quality of life throughout the city, despite experiencing it myself. After taking major related courses at UNH, I quickly realized that there is a fundamental issue in Manchester; the socioeconomic and sociocultural gap that is continuing to negatively affect the Manchester community. By collecting responses directly from residents in these communities, we can better assess how the City of Manchester can help and how to start closing the gap.

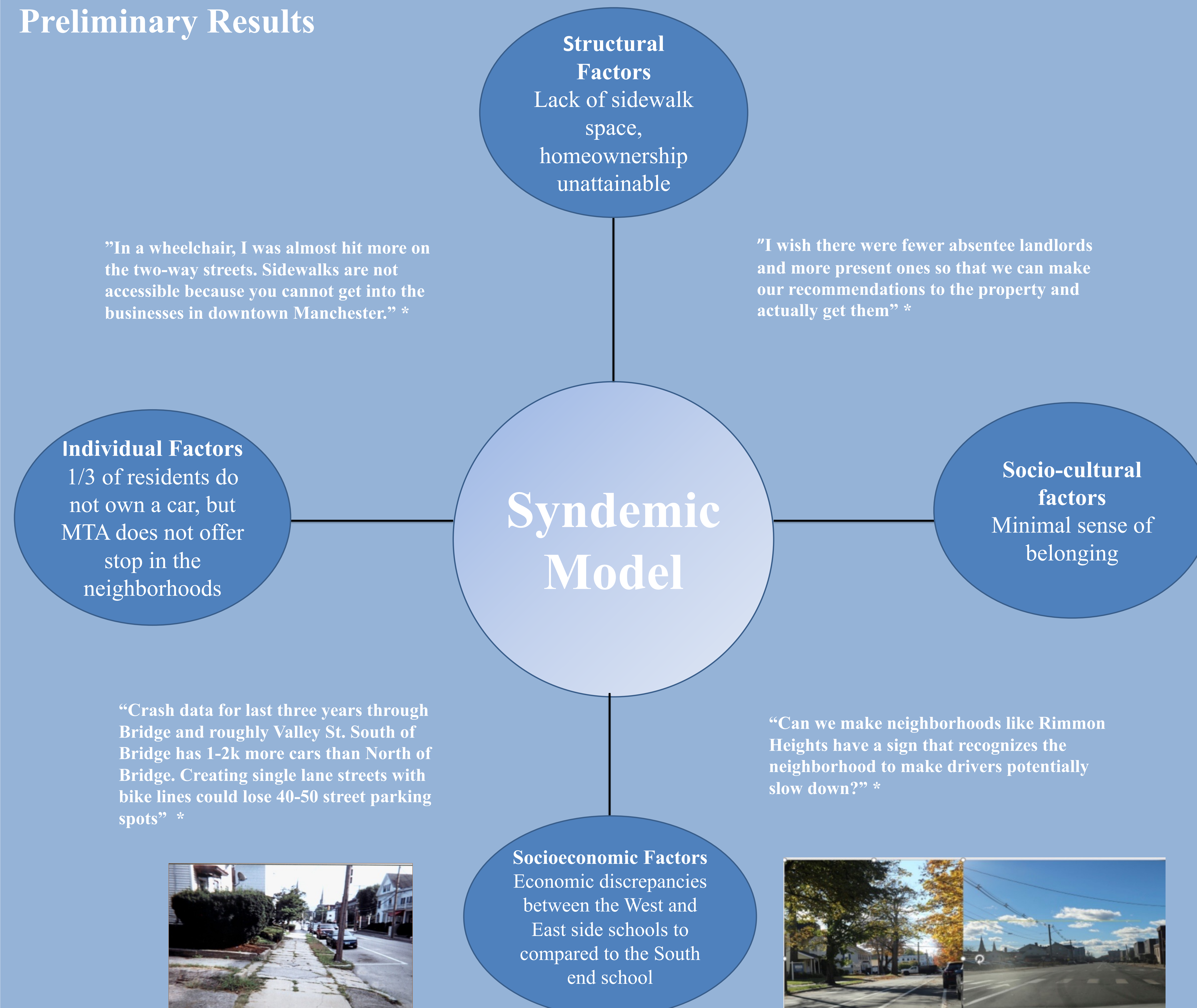


2012



2022

## Preliminary Results



”This is sidewalk in my neighborhood. It’s not safe, someone could cause a crash if they were riding a bike and got off to avoid a crack. It makes me feel people don’t care about our place.” – Manchester Youth Photovoice Participant

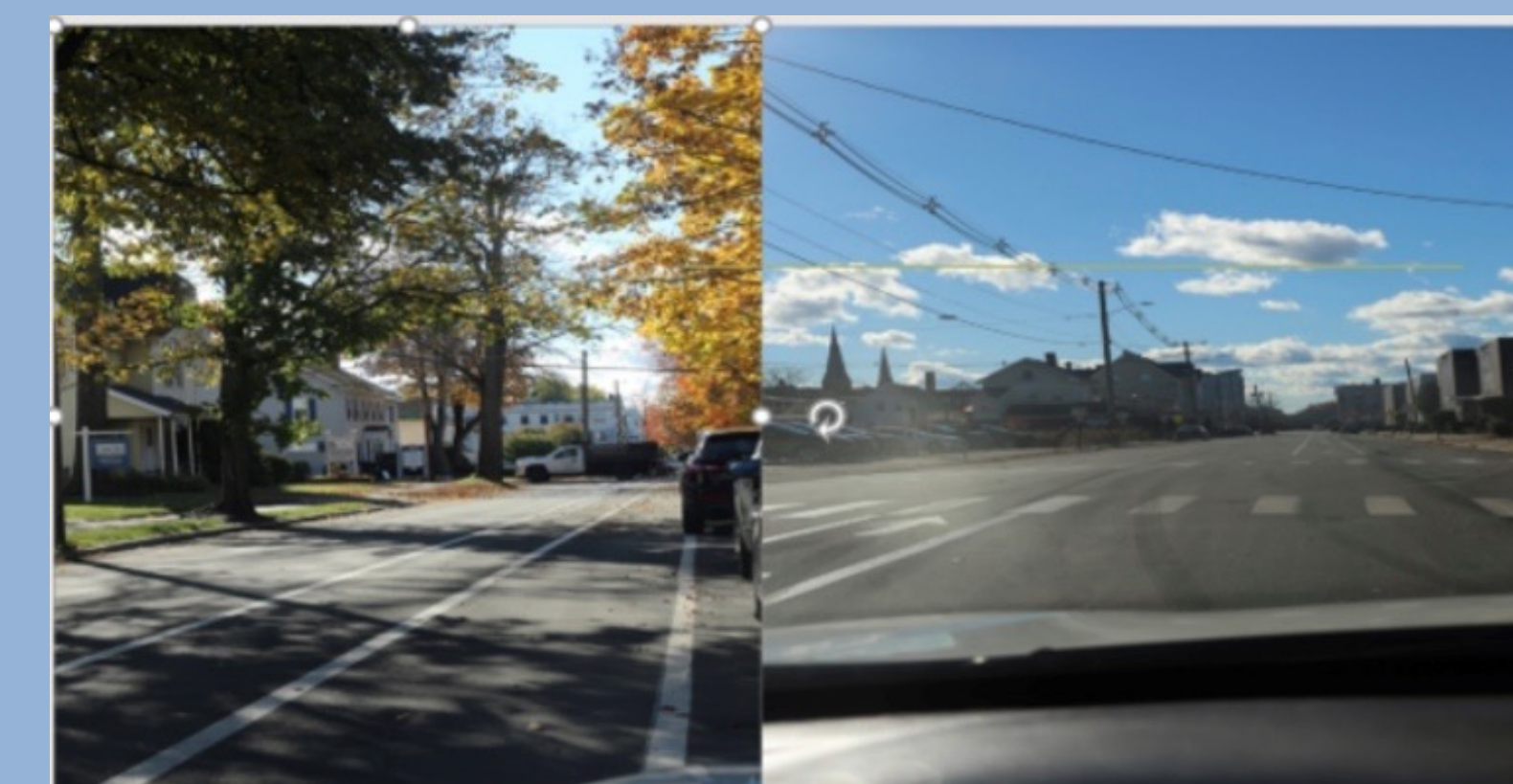


Figure 1: Picture by Arnold Mikolo comparing North of Bridge St. (left) to the South of Bridge St. (right)

\*Quotes taken from Maple St. Neighborhood Listening Session

## Field Observations on September 8, 2022

- Strong sense of community trying to help each other at “Mum’s Pop-Up Market”
- Manchester Grows giving out “MUM” currency so that vendors would make a profit
- Booths with free samples so that you community members could eat free food
- Don Quijote restaurant donating food to Farmer’s Market, so meals were free of charge
- Music of different languages at each vendor

## Acknowledgements

- Dr. Semra Aytur
- Dr. Robert McGrath
- Sandra Almonte
- Arnold Mikolo
- McNair staff
- NH Healthcare Workers for Climate Action

## Citations

- Singer, M/ (1996). A dose of drugs, a touch of violence, a case of AIDS: conceptualizing the SAVA syndemic. *Free Inq Creat Sociol.* ; 24: 99-110
- Caron RM, Adegboye ARA. COVID-19: A Syndemic Requiring an Integrated Approach for Marginalized Populations. *Front Public Health.* 2021 May 11;9:675280. doi: 10.3389/fpubh.2021.675280. PMID: 34046392; PMCID: PMC8144466.
- Aytur, SA., Butcher, R., Carlson, C., & Schifferdecker, K. (2014). Creating safe neighborhoods for obesity prevention: Perceptions of urban youth. In: Brennan, V., Kumanyika, S., & Zambrana, R. (eds). *Obesity Interventions in Underserved US Populations: Evidence and Directions.* Johns Hopkins University. (Peer reviewed book chapter; November, 2014). ISBN 978-1-4214-1544-4.