

EXAMPLE LAYOUT

Romy Eberle

Institute on Disability at the University of New Hampshire



Introduction

Lorem ipsum dolor sit amet, consectetur adipiscing elit, sed do eiusmod tempor incididunt ut labore et dolore magna aliqua. Ut enim ad minim veniam, quis nostrud exercitation ullamco laboris nisi ut aliquip ex ea commodo consequat. Duis aute irure dolor in reprehenderit in voluptate velit esse cillum dolore eu fugiat nulla pariatur. Excepteur sint occaecat cupidatat non proident, sunt in culpa qui officia deserunt mollit anim id est laborum.

Lorem ipsum dolor sit amet, consectetur adipiscing elit, sed do eiusmod tempor incididunt ut labore et dolore magna aliqua. Ut enim ad minim veniam, quis

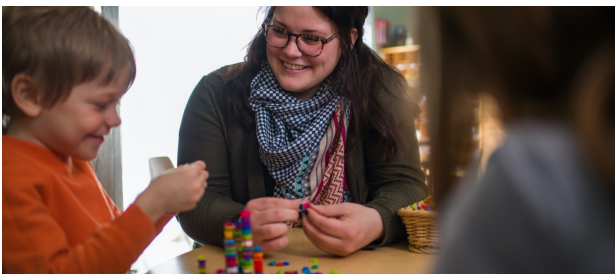
Methods

Lorem ipsum dolor sit amet, consectetur adipiscing elit, sed do eiusmod tempor incididunt ut labore et dolore magna aliqua. Ut enim ad minim qui officia deserunt mollit anim id est laborum.

- qui officia deserunt mollit anim id est laborum.
- qui officia deserunt mollit anim id est laborum.
- qui officia deserunt mollit anim id est laborum.

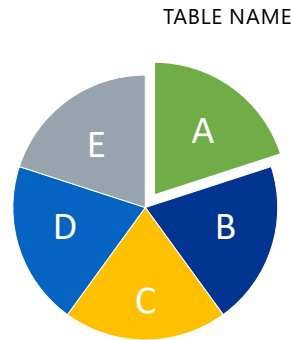
MORE DATA

1. Lorem ipsum dolor sit amet, consectetur adipiscing elit, sed do
2. Orci a scelerisque purus semper eget dui at. Neque aliquam vestibulum morbi blandit cursus.
3. eiusmod tempor incididunt ut labore et dolore magna aliqua.

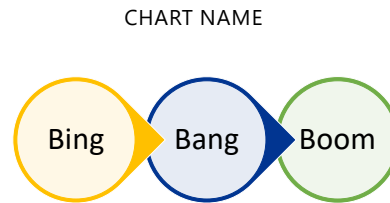


Above. Here is a caption for this picture. supported by a grant (#T73MC33246) from the Maternal and Child Health Bureau, Health Resources and Services Administration (HRSA), U.S. Department of Health and Human Services and administered by the Association of University Centers on Disabilities (AUCD). <https://iod.unh.edu/nh-me-lead>

Data Analysis



- A. This
- B. That
- C. This
- D. That
- E. This



Results

Lorem ipsum dolor sit amet, consectetur adipiscing elit, sed do eiusmod tempor incididunt ut labore et dolore magna aliqua. Orci a scelerisque purus semper eget dui at. Neque aliquam vestibulum morbi blandit cursus.

Lorem ipsum dolor sit amet, consectetur adipiscing elit, sed do eiusmod tempor incididunt ut labore et dolore magna aliqua. Orci a scelerisque purus semper eget dui at. Neque aliquam vestibulum morbi blandit cursus.

Lorem ipsum dolor sit amet, consectetur adipiscing elit, sed do eiusmod tempor incididunt ut labore et dolore magna aliqua. Orci a scelerisque purus semper eget dui at. Neque aliquam vestibulum morbi blandit cursus.

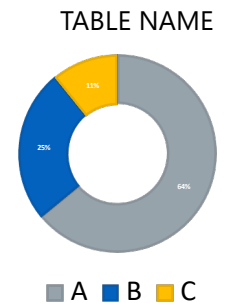
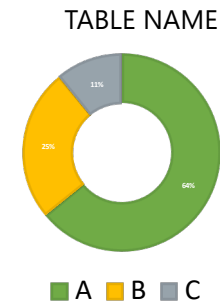
Lorem ipsum dolor sit amet, consectetur adipiscing elit, sed do eiusmod tempor incididunt ut labore et dolore magna aliqua. Orci a scelerisque purus semper eget dui at. Neque aliquam vestibulum morbi blandit cursus.

Conclusions

Lorem ipsum dolor sit amet, consectetur adipiscing elit, sed do eiusmod tempor incididunt ut labore et dolore magna aliqua. Orci a scelerisque purus semper eget dui at. Neque aliquam vestibulum morbi blandit cursus.

Lorem ipsum dolor sit amet, consectetur adipiscing elit, sed do eiusmod tempor incididunt ut labore et dolore magna aliqua. Orci a scelerisque purus semper eget dui at. Neque aliquam vestibulum morbi blandit cursus.

Lorem ipsum dolor sit amet, consectetur adipiscing elit, sed do eiusmod tempor incididunt ut labore et dolore magna aliqua. Orci a scelerisque purus semper eget dui at. Neque aliquam vestibulum morbi blandit cursus.



Lorem ipsum dolor sit amet, consectetur adipiscing elit, sed do eiusmod tempor incididunt ut labore et dolore magna aliqua. Orci a scelerisque purus semper eget dui at. Neque aliquam vestibulum morbi blandit cursus.

t dui at. Neque aliquam vestibulum morbi blandit cursus.

References

- Lorem ipsum dolor sit amet, consectetur adipiscing elit, sed do eiusmod tempor incididunt ut labore et dolore magna aliqua. O
- Orci a scelerisque purus semper eget dui at. Neque aliquam vestibulum morbi blandit cursus.
- Lorem ipsum dolor sit amet, consectetur adipiscing elit, sed do eiusmod tempor incididunt ut labore et dolore magna aliqua.

Poster Accessibility Tips

Institute on Disability/UCED at UNH



About this Template...

This template contains 6 layouts to choose from, each designed to meet or exceed basic accessibility standards.

To View/Add Layouts and Edit the Master...

- To view/add different layouts from the master slide deck, select the dropdown arrow under “new slide” in your home ribbon then select the layout you wish to use.
- To view and edit the master slides go to View> Slide Master.
- To add this as a template on your computer go to File>Save as> change file type to “powerpoint template” and save.

Fonts

- We recommend using Sans-Serif fonts that are large enough to be read from 5-10 feet away. Sizes may vary depending on the viewing distance and amount of text.
- Title: Use at least 72-point font or larger for poster titles. This template uses 125 point (ideal is 158).
- Section Titles: Use at least 46 to 56-point font for section titles. This template uses 60 point-font.
- Block Text/Body: Use at least 24-36. This template uses 40 point font for body text.

Colors

- Select a high contrast color scheme. Check your contrast with [WebAIM contrast checker](#).

Graphics and Images

Caption or title **all** images and graphics. Include alt text if you plan to share this digitally (template already includes alt text for background graphics).

Language

The first rule of plain language is: write for your audience. Use language your audience understands and feels comfortable with. Take your audience’s current level of knowledge into account.

Note. Many individuals who are blind or visually impaired rely on electronic versions of slides or posters in order to access the content. You may be asked to upload a version of your slides or poster before a conference. Please speak with someone if you need assistance preparing an accessible PDF or plain text version of your poster.

© 2015. This content is based on the Plain Language University Style Guide template from the Institute on Disability, the University of Maine Center for Community Inclusion and Disability Studies, and the Dartmouth Geisel School of Medicine. It is supported by a grant (#T73MC33246) from the Maternal and Child Health Bureau, Health Resources and Services Administration (HRSA), U.S. Department of Health and Human Services and administered by the Association of University Centers on Disabilities (AUCD). <https://iod.unh.edu/nh-me-lend>

Pathway to Advocacy for People with Disabilities

Rachelle Smith, B.S., Communication Sciences and Disorders Trainee
NH-ME LEND, Institute on Disability, University of New Hampshire



Introduction

Individuals with disabilities have been fighting for their right to live full, independent, and inclusive lives since the 1800's. This group had no legal protection against discrimination until 1990 when the Americans with Disabilities Act (ADA) was enacted. While this was a step in the right direction, further policy action is required to win equal rights for individuals with disabilities. HB467-FN is a bill proposed in the State of New Hampshire to ensure accessibility to children with disabilities in public playgrounds. Many state and local policymakers desire expert consultation from individuals to inform their understanding on the societal impacts possible through this bill. This poster presents the work done with Jennifer Bertrand and others at Community Crossroads in systematically supporting HB467-FN throughout the policy cycle. Multiple opportunities exist to advocate for this (and similar) bills in the future and the reader is encouraged to participate in this process moving forward.

Learning the System through Policy Partners at Community Crossroads [2]

Accomplished through relationship building, conducting one-to-one interviews, community organizing, communication, persuasion, issue framing, power and the ability to act, etc.

Events [2a]

- Participated in the Community Partnership Candidate Event
- Attended Legislative Liaison Meetings
- Attended Public Policy Outreach Meeting
- Attended a Brain Injury Committee Meeting
- Toured the State House
- Voted in the Local Elections
- Watched Governor Sununu's Budget Address

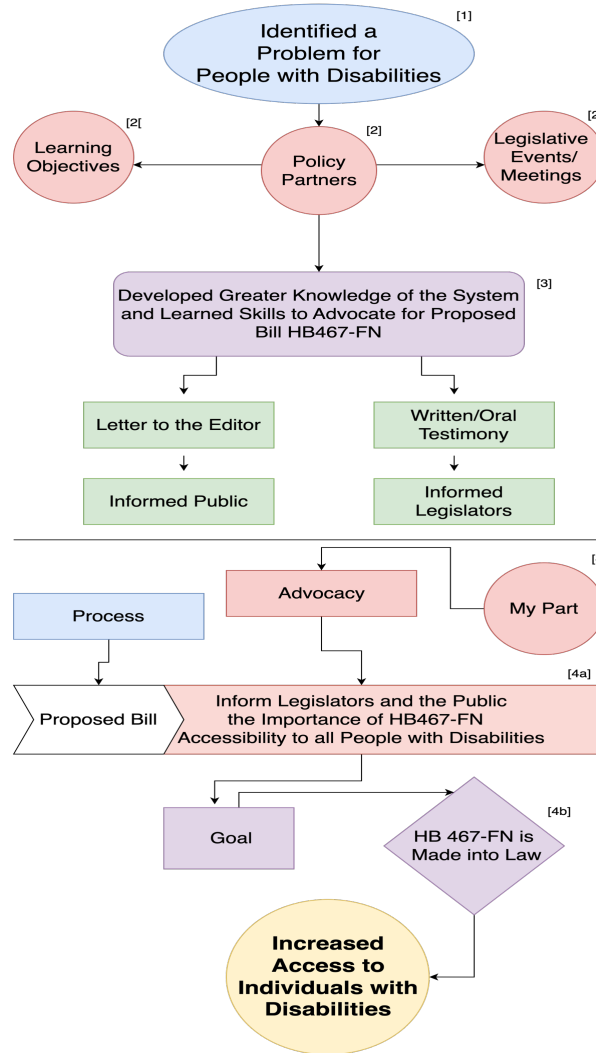
Advocating for Change [3]

- Understand the NH Legislative Process
- Initiate And Build Relationships With Legislators
- Provide Legislative Testimony
- Stay Informed
- Identify and Vote on Key Issues That are Important to You
- Engage in Public Outreach Efforts
- Build and Expand Networks
- Vote in Local, State and National Elections



NH State Senator Becky Whitley, Jennifer Bertrand, Senator Suzanne Prentiss and me at the State House

Pathway to Advocacy



Taking Action & Expected Outcomes [4]

HB467-FN Relative to Public Playground Accessibility

Actions [4a]

- Conducted 1-to-1 Meetings with NH State House Representatives
- Registered in Support of HB 467-FN
- Submitted Written Testimony for HB 467-FN
- Submitted a Letter to the Editor Informing the Public of HB 467-FN

Expected Outcomes [4b]

- Increased Public Awareness of Importance of Accessibility
- HB467-FN Passes Making All Public Playgrounds Accessible to All Individuals

Getting involved!

- Get Informed about Bills that Benefit Individuals with Disabilities by Visiting <https://www.nh.gov/index.htm>
- Register Your Support or Opposition of a Bill Online at <https://www.gencourt.state.nh.us/>
- Email a Letter of Testimony in Favor or in Opposition of a Bill to the Committee
- Write a Letter to the Editor of Your Local Newspaper to Inform the Public of a Bill
- Provide Oral Testimony to Support or Oppose a Bill in Person at a Public Hearing

Make a connection,
Make your voice heard,
Make a change in the lives of individuals with disabilities



References

- The General Court of New Hampshire. (n.d.). Retrieved March 3, 2023, from <https://www.gencourt.state.nh.us>
- Disability History: The Disability Rights Movement (U.S. National Park Service). (n.d.). Retrieved February 25, 2023, from <https://www.nps.gov/articles/disabilityhistoryrightsmovement.htm>
- NH.gov—The Official Web Site of New Hampshire State Government. (n.d.). Retrieved February 25, 2023, from <https://www.nh.gov/index.htm>
- Policy Partners. (n.d.). Community Crossroads. Retrieved February 25, 2023, from <https://communitycrossroadsnh.org/advocacy/policy-partners/>
- How a Bill Becomes a Law | New Hampshire Almanac | NH.gov. (n.d.). Retrieved March 3, 2023, from <https://www.nh.gov/almanac/bills.htm>

NH-ME LEND is a collaboration between the University of New Hampshire Institute on Disability, the University of Maine Center for Community Inclusion and Disability Studies, and the Dartmouth Geisel School of Medicine. It is supported by a grant (#T73MC33246) from the Maternal and Child Health Bureau, Health Resources and Services Administration (HRSA), U.S. Department of Health and Human Services and administered by the Association of University Centers on Disabilities (AUCD). <https://iod.unh.edu/nh-me-lead>

TITLE of Poster

Authors

NH-ME LEND, Institute on Disability, University of New Hampshire



Introduction

Individuals with disabilities have been fighting for their right to live full, independent, and inclusive lives since the 1800's. This group had no legal protection against discrimination until 1990 when the Americans with Disabilities Act (ADA) was enacted. While this was a step in the right direction, further policy action is required to win equal rights for those with disabilities. HB467-FN is a bill proposed in the State of New Hampshire to ensure accessibility to children with disabilities in public playgrounds. Many state and local policymakers desire expert consultation from medical professionals to inform their understanding on the societal impacts possible through this bill. This poster presents the work done with Jennifer Bertrand and others at Community Crossroads in systematically supporting HB467-FN throughout the policy cycle. Multiple opportunities exist to advocate for this (and similar) bills in the future and the reader is encouraged to participate in this process moving forward.

Methods

Add content here

SUBHEADING

- Add content here

Data Analysis

Add content here

Results

Add content here

Conclusions

Add content here

References

- Add content here