



Metagenomic Analysis of Heat-Disturbed Soil Microbial Community

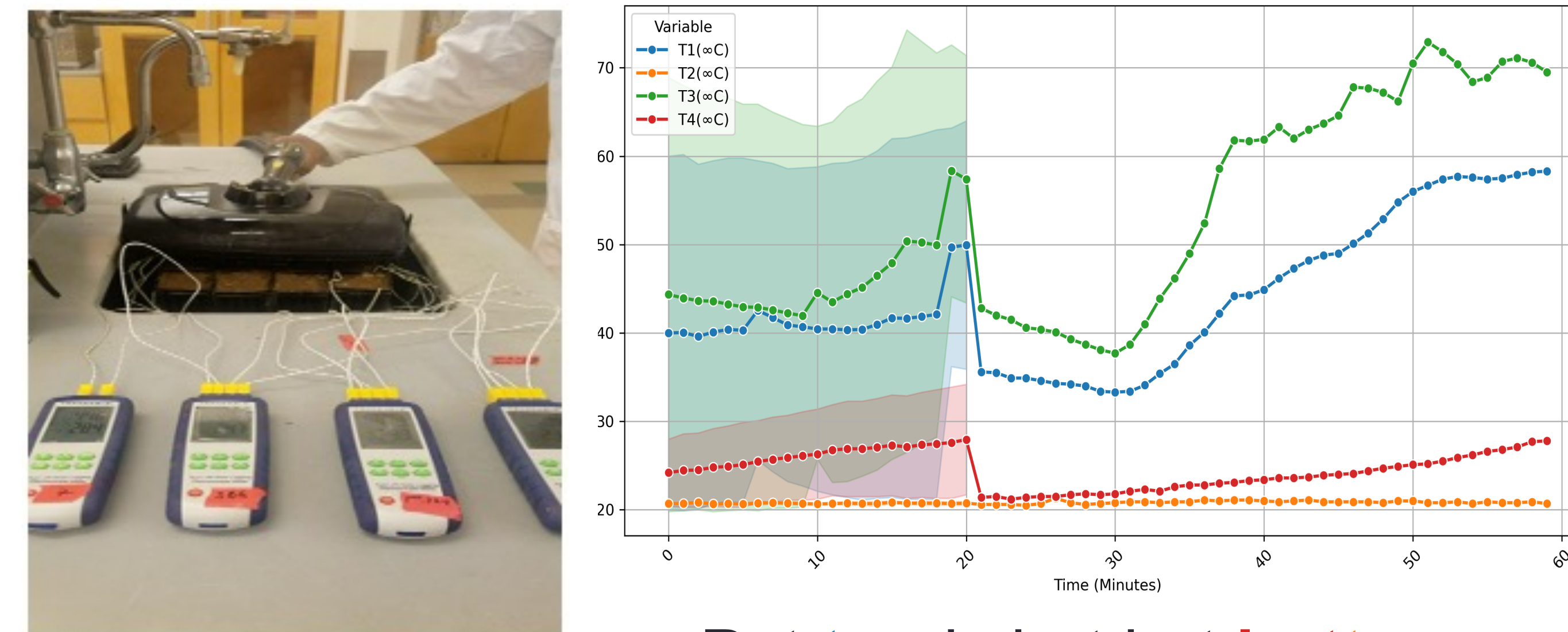
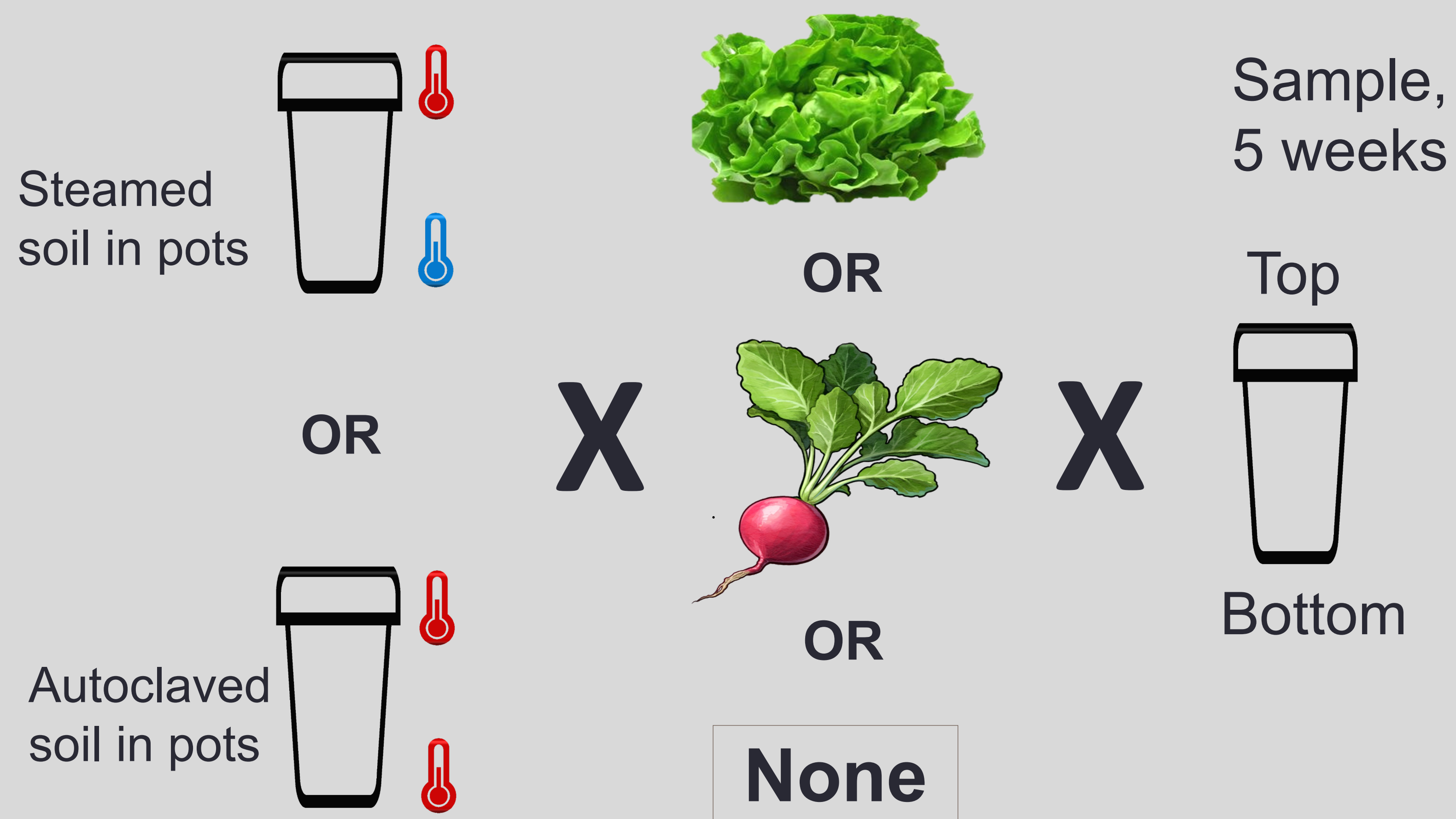


Admas Berisso¹ and Anna O'Brien¹

¹Department of Molecular, Cellular and Biomedical Sciences, University of New Hampshire

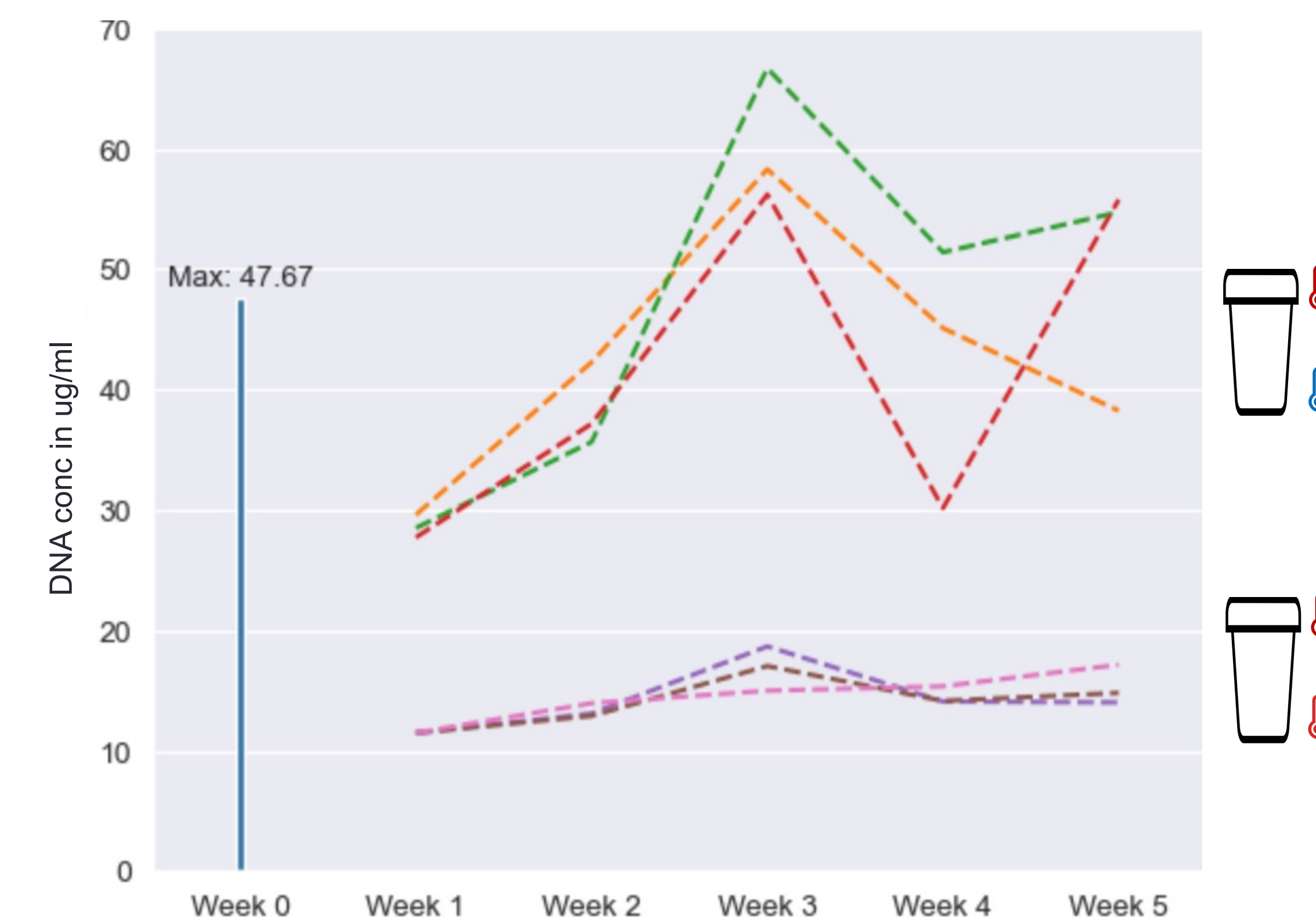
- Crops provide 82% of the global calorie supply.
- Soil microbes affect crop production and include both beneficial and pathogens.
- Heat treatments, including steaming, are popular for pests and disease control and can alter soil microbiomes.
- Planting after heat may alter microbiome recovery, as plants affect microbial colonization.

Do hosts alter the recovery of heat-disturbed microbiomes?

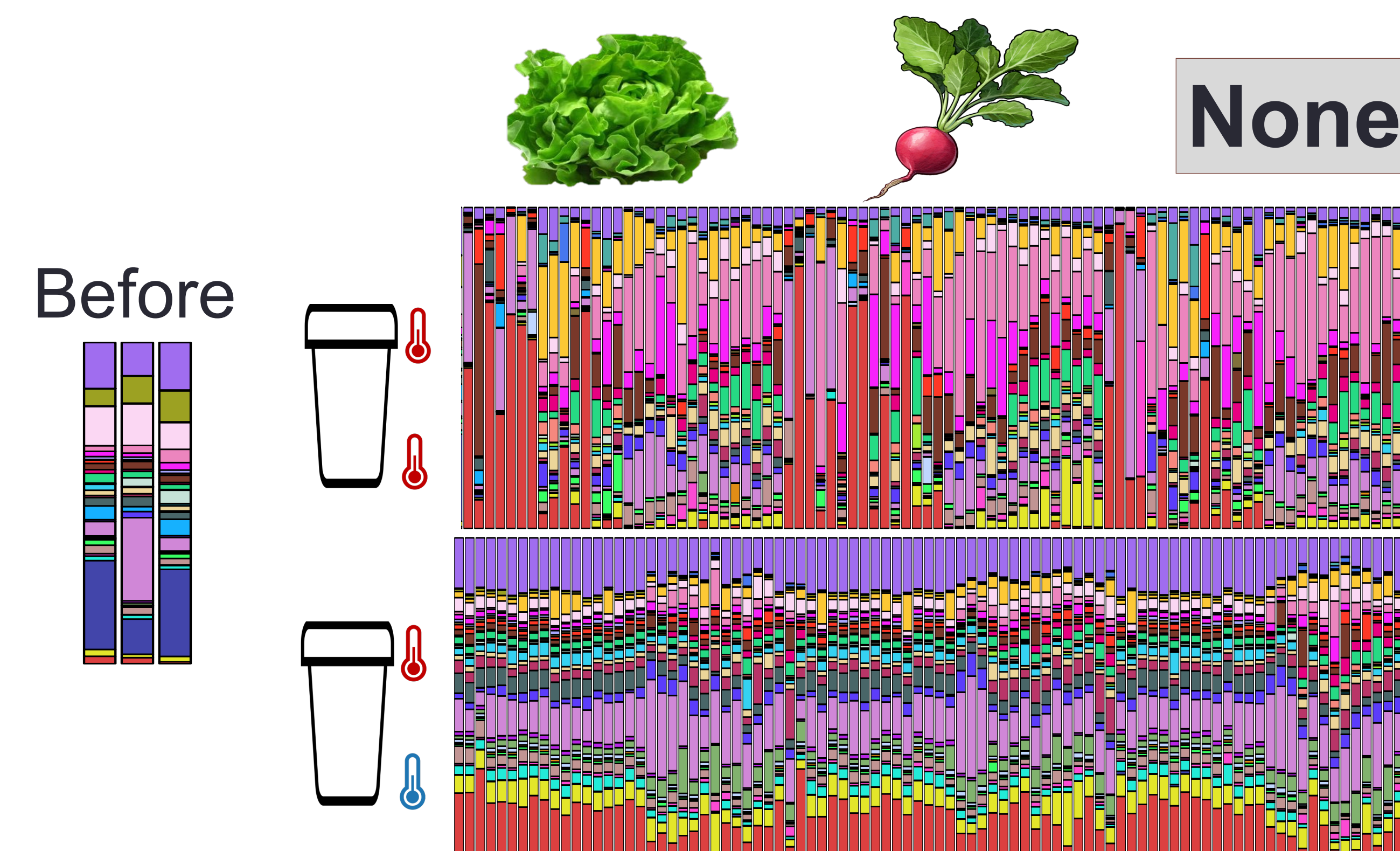


Pot **top** is hot but **bottom** is cool during steaming

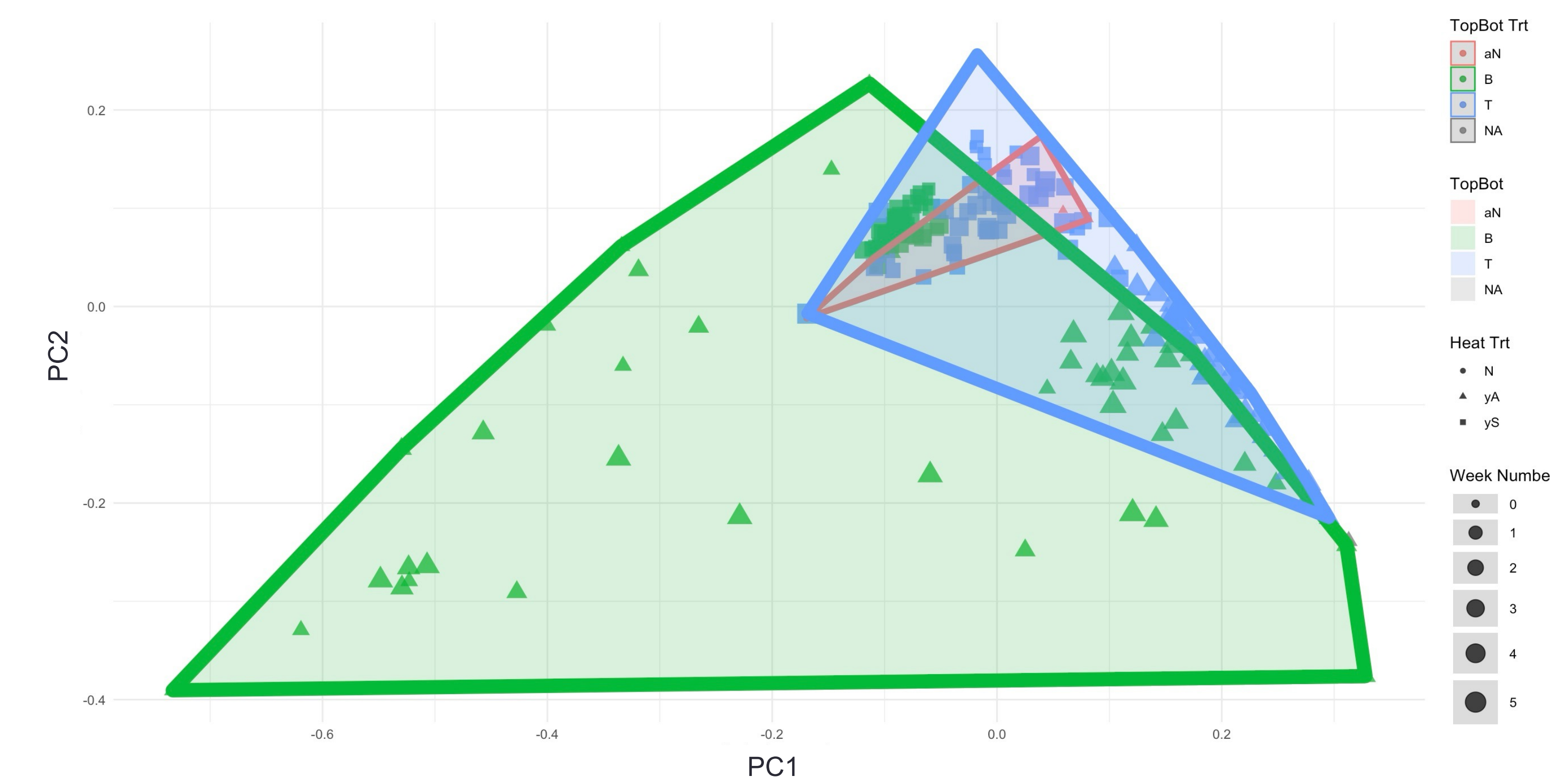
DNA concentration recovered faster in steamed pots.



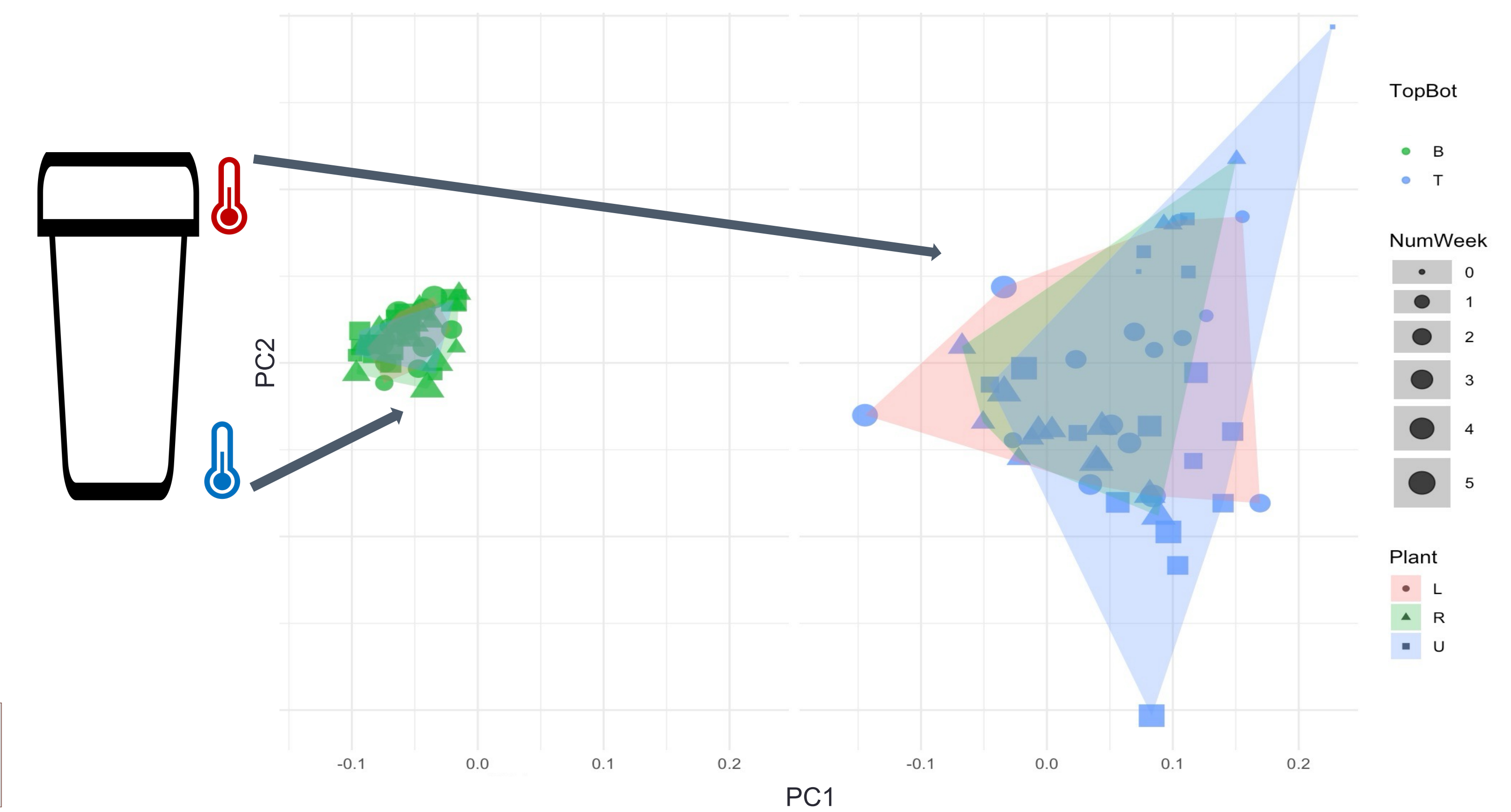
Autoclaving impacted microbiome composition more than steaming.



Plants may increase microbiome recovery in autoclaved samples.



Microbiomes were more resistant/resilient to steaming than autoclaving.



• Andrews, S. (2010). FastQC: A Quality Control Tool for High Throughput Sequence Data [Online]. Available online at: <http://www.bioinformatics.babraham.ac.uk/projects/fastqc/>

• Anthony M. Bolger, Marc Lohse, Bjoern Usadel, Trimmomatic: a flexible trimmer for Illumina sequence data, *Bioinformatics*, Volume 30, Issue 15, August 2014, Pages 2114–2120, <https://doi.org/10.1093/bioinformatics/btu170>

• Hannah Ritchie and Max Roser (2019) - "Half of the world's habitable land is used for agriculture" Published online at OurWorldinData.org. Retrieved from: <https://ourworldindata.org/global-land-for-agriculture> [Online Resource]

• Knight, C.G., Nicolitch, O., Griffiths, R.I. et al. Soil microbiomes show consistent and predictable responses to extreme events. *Nature* **636**, 690–696 (2024). <https://doi.org/10.1038/s41586-024-08185-3>

• Lu J, Breitwieser FP, Thielen P, Salzberg SL. 2017. Bracken: estimating species abundance in metagenomics data. *PeerJ Computer Science* 3:e104 <https://doi.org/10.7717/peerj-cs.104>

• Wippel, K., Tao, K., Niu, Y. et al. Host preference and invasiveness of commensal bacteria in the Lotus and Arabidopsis root microbiota. *Nat Microbiol* **6**, 1150–1162 (2021). <https://doi.org/10.1038/s41564-021-00941-9>

• Wood, D.E., Salzberg, S.L. Kraken: ultrafast metagenomic sequence using exact alignments. *Genome Biol* **15**, R46 (2014). <https://doi.org/10.1186/gb-2014-15-3-r46>

