



# Stormwater Management at UNH



Allison Kish '27 Bioengineering, Annie Ragland '28 Environmental Science

## What is Stormwater Management?

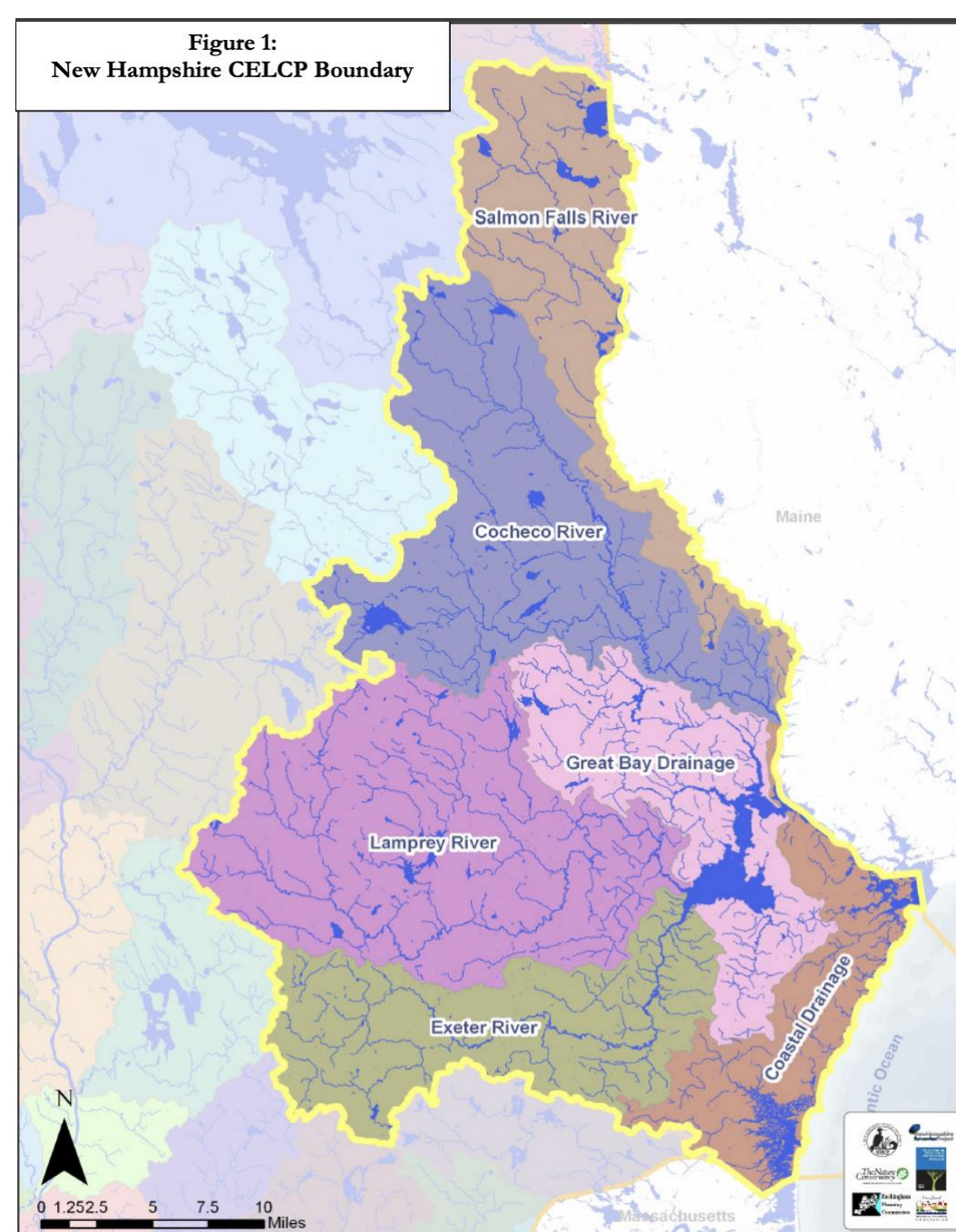
- Systems designed to capture rainwater runoff, with a focus on water filtration through the ground
- Filters pollutants to mitigate oil, silt, and especially nitrogen from reaching bodies of water/the environment

## Why Stormwater Management is Important?



UNH is a contributor to the **Great Bay watershed**. Like most estuaries, the Great Bay is extremely biodiverse.

However, this unique ecosystem is highly susceptible to pollution damage especially with the effects of climate change increasing extreme weather events



## Types of Management Systems

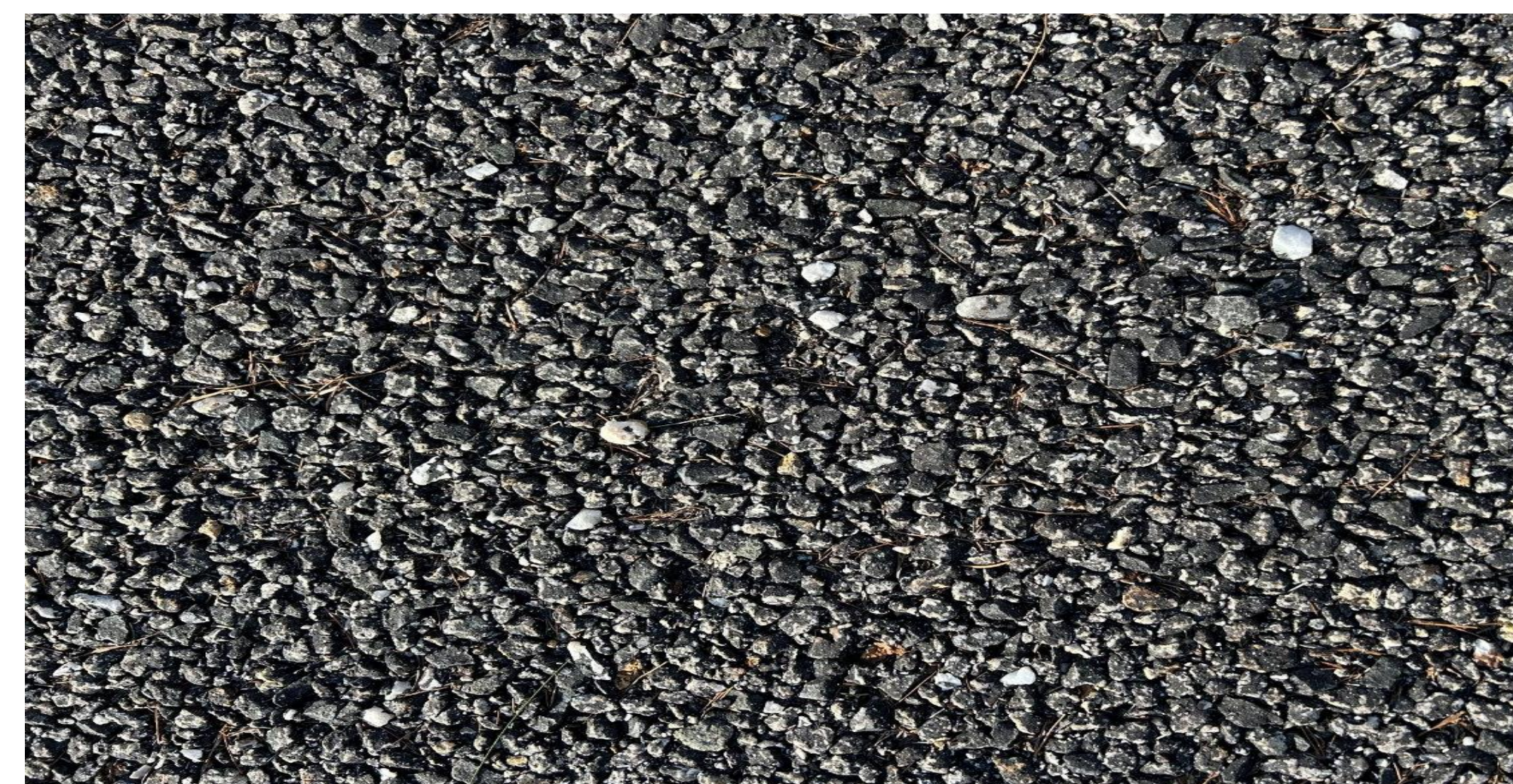
### Bioretention



### Permeable Pavers



### Porus Asphalt



There are over 650 stormwater installations including catch basins, outfalls, and piping throughout the UNH Campus and Town of Durham.

## What Do Stormwater Management Interns Do?

- Inspect rainwater management systems across campus
- Educate community members on the significance of SWM
- Minimize pollutants in rainwater before it reaches waterways
- Raise awareness of rainwater sites to prevent litter and pollution



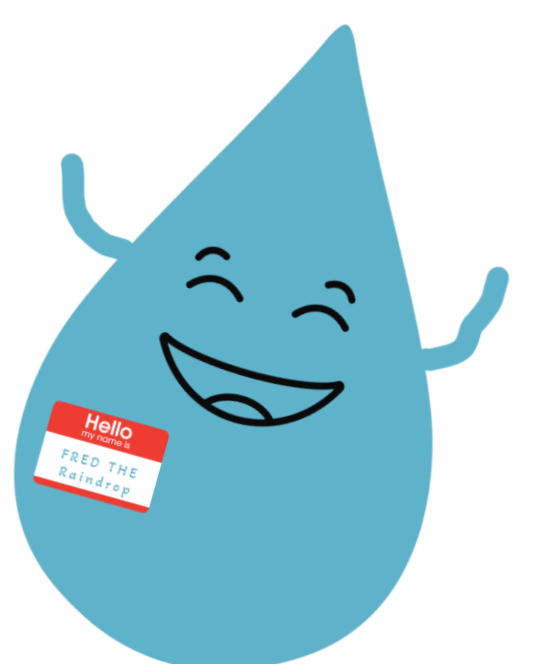
Inspections can catch damaged infrastructure like this fallen overflow pipe outside Wildcat Stadium

## Making the Invisible Visible: Public Outreach



This is our outreach mascot: **Fred the Raindrop!**

Holding events where the community comes together like our “Rain Garden Leaf Pick Up” aids in infrastructure maintenance and education



Sustainability Institute